

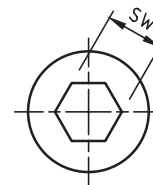
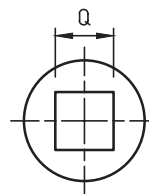
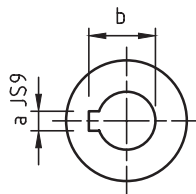
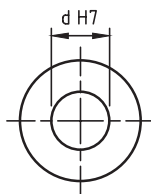
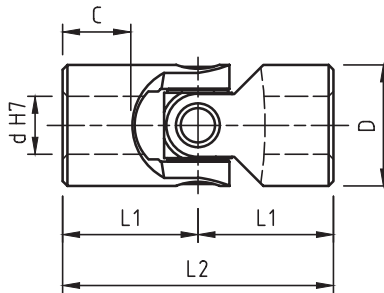


# GIUNTI SINGOLI ALTA VELOCITÀ CON CUSCINETTI A RULLINI

HIGH SPEED SINGLE JOINTS  
WITH NEEDLE ROLLER BEARINGS

serie «H»  
series (DIN 808)

- Cuscinetti a rullini lubrificati a vita. Nessuna manutenzione.  
*Roller bearings lubricated for life. No maintenance required.*
- Precisi e versatili, silenziosi e scorrevoli; vasto campo di applicazione.  
*Precise and versatile, silent and smooth running; wide application field.*
- Angolo max 45°. Giri max. 4000/min.  
*Max angle 45°. Max speed 4000 R.P.M.*
- "H" corrispondenti DIN 808 - "HB" corrispondenti DIN 808/7551  
*"H" to DIN 808 - "HB" to DIN 808/7551*
- Esecuzioni speciali a richiesta.  
*Special executions on request.*



| Mod. Type | Codice / Code | d  | D  | L2  | L1   | C  | Codice / Code | Codice / Code | a  | b    | Codice / Code | Q  | * SW | Peso Weight Kg |
|-----------|---------------|----|----|-----|------|----|---------------|---------------|----|------|---------------|----|------|----------------|
| 03H       | SH0S 1000     | 10 | 22 | 48  | 24   | 12 | SH0S 101C     | SH0S 102C     | 3  | 11,4 | SH0S 102Q     | 10 | 10   | 0,10           |
| 04H       | SH0S 1200     | 12 | 25 | 56  | 28   | 13 | SH0S 121C     | SH0S 122C     | 4  | 13,8 | SH0S 122Q     | 12 | 12   | 0,16           |
| 05H       | SH0S 1400     | 14 | 28 | 60  | 30   | 14 | SH0S 141C     | SH0S 142C     | 5  | 16,3 | SH0S 142Q     | 14 | 14   | 0,20           |
| 1H        | SH0S 1600     | 16 | 32 | 68  | 34   | 16 | SH0S 161C     | SH0S 162C     | 5  | 18,3 | SH0S 162Q     | 16 | 16   | 0,30           |
| 2H        | SH0S 1800     | 18 | 36 | 74  | 37   | 17 | SH0S 181C     | SH0S 182C     | 6  | 20,8 | SH0S 182Q     | 18 | 18   | 0,45           |
| 3H        | SH0S 2000     | 20 | 42 | 82  | 41   | 18 | SH0S 201C     | SH0S 202C     | 6  | 22,8 | SH0S 202Q     | 20 | 20   | 0,60           |
| 4H        | SH0S 2200     | 22 | 45 | 95  | 47,5 | 22 | SH0S 221C     | SH0S 222C     | 6  | 24,8 | SH0S 222Q     | 22 | 22   | 0,95           |
| 5H        | SH0S 2500     | 25 | 50 | 108 | 54   | 26 | SH0S 251C     | SH0S 252C     | 8  | 28,3 | SH0S 252Q     | 25 | 25   | 1,20           |
| 6H        | SH0S 3000     | 30 | 58 | 122 | 61   | 29 | SH0S 301C     | SH0S 302C     | 8  | 33,3 | SH0S 302Q     | 30 | 30   | 1,85           |
| 6H1       | SH0S 3200     | 32 | 58 | 130 | 65   | 33 | SH0S 321C     | SH0S 322C     | 10 | 35,3 | SH0S 322Q     | 30 | 30   | 2,00           |
| 7H        | SH0S 3500     | 35 | 70 | 140 | 70   | 33 | SH0S 351C     | SH0S 352C     | 10 | 38,3 | —             | ** | **   | 3,15           |
| 8H        | SH0S 4000     | 40 | 80 | 160 | 80   | 38 | SH0S 401C     | SH0S 402C     | 12 | 43,3 | —             | ** | **   | 4,60           |
| 9H        | SH0S 5000     | 50 | 95 | 190 | 95   | 46 | SH0S 501C     | SH0S 502C     | 14 | 53,8 | —             | ** | **   | 7,60           |
| 04HB      | SHBS 1200     | 12 | 22 | 62  | 31   | 18 | SHBS 121C     | SHBS 122C     | 4  | 13,8 | SHBS 102Q     | 10 | 10   | 0,12           |
| 1HB       | SHBS 1600     | 16 | 25 | 74  | 37   | 21 | SHBS 161C     | SHBS 162C     | 5  | 18,3 | SHBS 122Q     | 12 | 12   | 0,20           |
| 3HB       | SHBS 2000     | 20 | 32 | 86  | 43   | 24 | SHBS 201C     | SHBS 202C     | 6  | 22,8 | SHBS 162Q     | 16 | 16   | 0,35           |
| 5HB       | SHBS 2500     | 25 | 42 | 108 | 54   | 31 | SHBS 251C     | SHBS 252C     | 8  | 28,3 | SHBS 202Q     | 20 | 20   | 0,80           |
| 6HB       | SHBS 3000     | 30 | 50 | 132 | 66   | 38 | SHBS 301C     | SHBS 302C     | 8  | 33,3 | SHBS 252Q     | 25 | 25   | 1,20           |
| 8HB       | SHBS 4000     | 40 | 70 | 166 | 83   | 46 | SHBS 401C     | SHBS 402C     | 12 | 43,3 | —             | ** | **   | 2,90           |