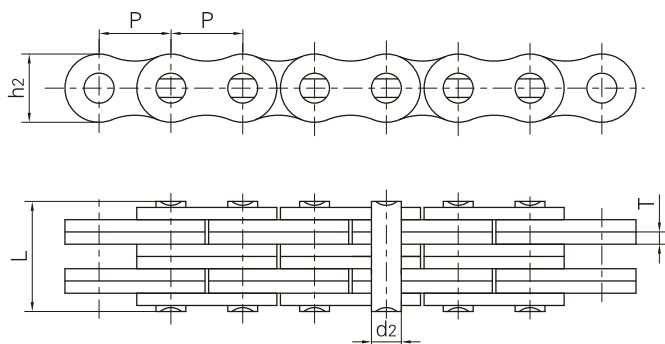
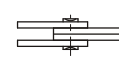


板式鏈  
Leaf chains



鏈板組合  
Plate lacing



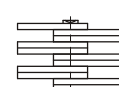
2x2



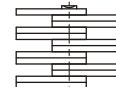
3x4



4x4



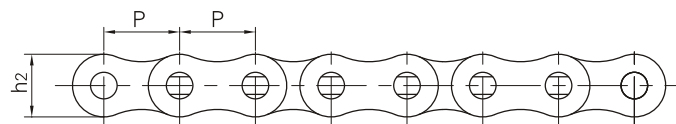
6x6



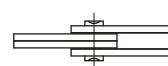
8x8

ANSI 鏈號	節距 Pitch	鏈板組合 Plate lacing	鏈板高度 Plate depth	鏈板厚度 Plate thickness	銷軸直徑 Pin diameter	銷軸長度 Pin length	極限拉伸載荷 Ultimate tensile strength	平均拉伸載荷 Average tensile strength	每米長重 Weight per meter
ANSI Chain No.	P		h <sub>2</sub> max	T max	d <sub>2</sub> max	L max	Q min	Q <sub>0</sub>	q
	mm		mm	mm	mm	mm	kN/LB	kN	kg/m
AL322	9.525	2 X 2	7.7	1.3	3.58	6.8	9.0/2045	10.2	0.23
AL344		4 X 4				11.6	18.0/4090	20.0	0.46
AL422	12.7	2 X 2	10.4	1.5	3.96	8.3	14.1/3205	16.9	0.39
AL444		4 X 4				14.4	28.2/6409	35.2	0.74
AL466		6 X 6				20.5	42.3/9614	52.7	1.13
AL522	15.875	2 X 2	12.8	2.03	5.08	11.05	22.0/5000	27.5	0.64
AL534		3 X 4				17.0	33.0/7500	46.0	1.10
AL544		4 X 4				19.4	44.0/10000	55.0	1.25
AL566		6 X 6				27.5	66.0/15000	82.5	1.79
AL622	19.05	2 X 2	15.6	2.42	5.94	13.0	37.0/8409	44.4	0.86
AL644		4 X 4				22.7	63.7/14450	78.8	1.76
AL666		6 X 6				32.2	100.1/22750	118.6	2.60
AL688		8 X 8				42.2	133.4/30317	156.6	3.49
AL822	25.4	2 X 2	20.5	3.25	7.92	16.0	56.7/12886	68.6	1.54
AL844		4 X 4				29.4	113.4/25773	135.6	3.00
AL866		6 X 6				44.2	170.0/38636	202.3	4.46
AL1022	31.75	2 X 2	25.6	4.0	9.53	19.6	88.5/20114	107.1	2.37
AL1044		4 X 4				36.4	177.0/40227	203.6	4.68
AL1066		6 X 6				52.3	265.0/60227	315.3	7.20
AL1088		8 X 8				68.5	354.0/80454	421.2	9.94
AL1222	38.1	2 X 2	30.5	4.8	11.10	24.3	127.0/28864	151.1	3.65
AL1244		4 X 4				43.8	254.0/57727	299.7	7.05
AL1266		6 X 6				63.2	381.0/86591	426.3	10.50
AL1288		8 X 8				82.6	508.0/11545	568.4	14.03
AL1444	44.45	4 X 4	36.4	5.6	12.64	51.3	372.7/84705	413.6	10.34
AL1466		6 X 6				74.56	559.0/127045	620.4	15.16
AL1644	50.8	4 X 4	41.6	6.4	14.21	58.0	471.0/107045	522.8	12.98
AL1666		6 X 6				83.8	706.0/160454	783.6	19.76
AL1688		8 X 8				109.5	942.0/214090	1045.5	25.47

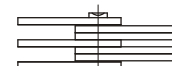
板式鏈  
Leaf chains



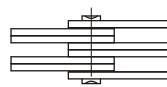
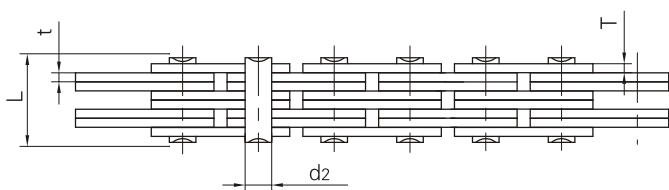
鏈板組合  
Plate lacing



2x2



3x4



4x4



6x6



8x8

Vision Chain No.	节距 Pitch	鏈板組合 plate lacing	鏈板高度 Plate depth	鏈板厚度 Plate thickness	销轴直径 Pin diameter	销轴长度 Pin length	极限拉伸载荷 Ultimate tensile strength	平均拉伸载荷 Average tensile strength	每米长重 Weight per meter
	P		h2 max	t/T max	d2 max	L max	Q min	Q0	q
	mm		mm	mm	mm	mm	kN/LB	KN	kg/m
AL0522	8.000	2x2	7.1	0.8	2.31	5.0	4.4/990	4.6	0.15
AL0544		4x4				8.2	8.8/1980	9.3	0.28
AL322F1	9.525	2x2	7.0	1.3	3.58	7.5	9.3/2092	9.8	0.22
AL344F1		4x4				12.8	18.5/4162	19.4	0.42
AL366F1		6x6				18.2	27.8/6254	29.2	0.62
AL388F1		8x8				23.6	37.0/8323	38.8	0.82
AL866F1	25.400	6x6	20.5	3.0	7.92	40.3	135.0/30370	148.5	4.40
AL1266F1	38.100	6x6	30.0	4.8	13.30	64.3	420.0/94482	462.0	9.68
BL866F1	25.400	6x6	24.1	3.1/4.0	10.85	45.7	200.0/44992	220.0	6.14
BL834F2		3x4				29.5	120.0/26995	132.0	3.76
BL834F3	25.400	3x4	24.1	4.0	10.90	32.9	142.0/31944	156.2	4.44
BL866F3		6x6				52.2	253.6/57050	279.0	7.48
BL834F5		3x4		3.1/4.0		28.0	120.0/26995	132.0	3.64
BL866F5		6x6		3.3/4.0		45.3	200.0/44992	220.0	4.94
LL1622F6	25.400	2x2	20.0	3.0	8.28	15.6	58.0/13047	63.8	1.40
LH3288F1	50.800	8x8	47.8	6.9	20.20	122.0	1200.0/269950	1320.0	33.53
LH3266F2	50.800	6x6	48.2	7.0	17.46	91.8	867.0/195040	953.7	24.52
LL3244F2	50.800	4x4	43.1	6.0	17.76	54.0	520.0/116978	572.0	12.62
LL4888H	76.200	8x8	70.0	12.0	36.50	204.0	2630.0/591638	2893.0	83.80